

Hospital Lamp Supplies

a division of **HYBEC**



MD80938

Hybec Limited is the European Headquarters of the Miyakawa Corporation in Japan. With 12 subsidiaries worldwide, Hybec purchases its products globally and can export to any country. This international purchasing power allows us to offer products and services at extremely competitive prices. Hybec has consequently saved Hospitals and other Organisations many thousands of pounds on the cost of equipment and replacement products. Based in Leicester, Hospital Lamp Supplies have been supplying Replacement Lamps, UV Tubes, Fibre Optic Cables, and Dermatology Equipment to NHS Trusts, PCTs, Private Hospitals and other organisations for many years. With this wealth of experience, a substantial stock profile, and a dedicated sales team, we are able to offer a fast, efficient and cost effective service to accommodate your requirements.

Electronic Data Transfer



We are happy to try to accommodate all of your IT data transfer needs. We accept orders by e-mail, pdf and web servers and can deliver invoices via OB10 for Shared Business Services and other users. Should you use a different service to OB10, we would be very happy to discuss your requirements and our IT team will work with you to achieve your e-procurement obligations at no additional cost to yourselves



Hybec and the Environment



In July 2007 the EU Directive for WEEE (Waste Electrical and Electronic Equipment) Regulations are fully in force in the UK. Hybec Limited recognise their responsibilities towards the environment and as a producer of gas discharge lamps, we are registered with Recolight's WEEE Compliance scheme for Lamp Producers. This means that for all gas discharge lamps (not filament lamps or tungsten halogen lamps), a recycling charge of 15p per lamp is forwarded to Recolight, a non-profit organisation, for the treatment, recycling and disposal of WEEE. As a trade supplier, this separate amount will be visible on our invoices. This charge is also subject to VAT. Lamps which fall into this category are straight fluorescent lamps, compact fluorescent lamps, and high intensity discharge lamps - these products are all marked either on the lamp or the packaging with a 'wheelie bin' symbol. End of life lamps should be sent to a Recolight Designated Collection Facility (NOT to Hybec Limited) and your nearest facility can be located on the Recolight web site www.recolight.co.uk. The above only applies to items supplied to UK customers and non-UK customers will have their own WEEE legislation and arrangements. Hybec Limited's Recolight Registration Number is WEE/FB0081UW



We accept all major
UK credit cards and



This catalogue lists a small proportion of the lamps that are available to you. If you cannot identify the product you require, please contact our Technical Sales Administrator and take advantage of our free of charge Lamp Identification Service.

Whilst we have always been very willing to identify lamps which have been sent to us in the post, we are finding that many departments have both digital cameras and e-mail facilities. We are happy to identify lamps which are photographed and e-mailed to us on hls@hybec.com.

Please supply us with as much information as possible, such as voltage, wattage, which piece of equipment the lamp is from, brand of lamp and any numbers visible.

INDEX

Pages 3-10

Lamp Photographs

The top right hand corner of each picture shows the product code of the actual lamp photographed. All other references to the picture number in the Picture Number and HLS Number indexes indicate that the lamp is of a similar type

Pages 11-12

Picture Number Index

Please see note above

Page 13

Lamp References

Lists equivalents to common lamp types

Pages 14-15

Lamp Manufacturers References

Eg; Hanaulux, Keeler, Osram.

Pages 16-20

Medical Equipment References

Eg; Microscopes, Projectors, Slit Lamps

Pages 21-23

HLS Number Index

Pages 24-25

Dental Equipment Manufacturers References

Pages 26-28

Dental Lamp Photographs

Pages 29-31

Dental Lamp Supplies Part Number Index

Page 32

Fibre Optic Cables

Page 33

Phototherapy Tubes

Page 34

Durham Erythema Test Device

Page 35

Durham Medimask

Page 36

Dr Hoenle Products

Pages 37

General lighting Lamps

Photographs 1-18



Photographs 19-36



Photographs 37-54



Photographs 55-72



Photographs 73-90



Photographs 91-108



Photographs 109-126



109



110



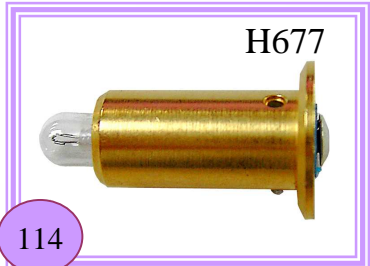
111



112



113



114



115



116



117



118



119



120



121



122



123



124



125



126

Photographs 127-144



Picture Number to HLS Number Index

	HLS	Volts	Watts	Base		HLS	Volts	Watts	Base		HLS	Volts	Watts	Base
1	H004	12	100	GY6.35	14	H051	24	50	G8	32	H368	20	140	GX5.3
1	H043	12	50	GY6.35	15	H164	12	50	Special	32	H388	12	100	GZ6.35
1	H120	24	50	GY6.35	16	H066	6.6	45	PK30D	32	H471	12	35	GX5.3
1	H246	12	35	GY6.35	16	H068	6.6	100	PK30D	33	H157	20	150	GX5.3
1	H469	24	100	GY6.35	16	H166	12	55	PK22S	33	H201	12	35	GX5.3
1	H815	12	50	GY6.35	16	H493	12	35	PK22S	33	H211	12	50	GX5.3
1	H1024	24	50	GY6.35	17	H218	12	55	P14.5S	33	H225	12	50	GU5.3
2	H005	24	150	G6.35	17	H223	24	70	P14.5S	33	H275	12	20	GU4
2	H006	12	50	G6.35	18	H307	12	55	P14.5S +	33	H300	12	50	GX5.3
2	H007	24	250	G6.35	18	H307			Holes	33	H458	82	410	GY5.3
2	H014	15	150	G6.35	19	H044	22	220	GY9.5	33	H470	20	150	GX5.3
2	H015	36	400	G6.35	19	H045	33	230	GY9.5	33	H826	12	20	GU5.3
2	H032	22.8	50	G6.35	19	H315	240	400	GY9.5	33	H866	12	50	GU5.3
2	H033	22.8	40	G6.35	19	H351	240	500	GY9.5	33	H969	12	35	GU4
2	H050	24	50	G6.35	19	H465	240	625	GY9.5	33	H1433	12	20	GU5.3
2	H053	24	150	G6.35	20	H331	240	800	GY9.5	33	H1434	12	35	GU5.3
2	H214	24	150	G6.35	20	H333	240	500	GY9.5	34	H219	12	20	BA15D
2	H264	12	75	G6.35	21	H213	240	500	GY9.5	34	H256	6	35	BA15D
2	H319	12	100	G6.35	21	H398	240	300	GY9.5	34	H335	12	50	BA15D
2	H381	22.8	50	G6.35	22	H340	23	100	X514SP	34	H437	12	50	BA15D
2	H382	22.8	40	G6.35	23	H424	24	120	X514	35	H238	82	300	GX5.3
2	H420	24	100	G6.35	23	H663	24	100	X514	36	H433	13.8	85	Leads
2	H495	12	30	G6.35	23	H664	24	140	X514	36	H450	12	100	Leads
2	H509	24	100	G6.35	24	H366	12	50	P30S	37	H024	24	25	BA15D
2	H889	12	30	G6.35	25	H396	12	30	Ceramic	38	H026	24	50	BX22D
3	H023	22.8	50	G6.35AX	26	H502	12	4.2a	P44S	38	H027	50	50	BX22D
3	H240	24	100	G6.35AX	27	H260	6	20	Special	38	H231	230	50	BX22D
3	H373	22.8	50	G6.35AX	28	H125	22.8	90	Special	39	H028	24	40	BX22D
3	H469	24	100	GY6.35	29	H389	24	50	Special	39	H308	240	50	BX22D
3	H672	24	120	G6.35AX	30	H390	21.5	130	Special	40	H625	24	40	BA15D
3	H693	22.8	50	G6.35AX	31	H524		70	2P Plug	40	H030	50	30	BA15D
3	H814	12	35	GY6.35	32	H010	12	75	GZ6.35	40	H386	24	40	BX22D
3	H1385	12	50	GY6.35	32	H011	12	100	GZ6.35	41	H031	24	40	BA15D
4	H048	6	20	G4	32	H016	24	200	GX5.3	41	H227	12	25	BA15D
4	H247	12	20	G4	32	H018	24	250	GX5.3	41	H250	110	30	B15D
5	H160	6	30	G4	32	H055	21	150	GX5.3	41	H380	50	30	BA15D
5	H520	12	20	G4S	32	H057	21	150	GX5.3	41	H439	115	30	BA15D
5	H1247	24	50	G6.35	32	H058	12	35	GX5.3	42	H034	24	60	BA20D
6	H285	6	10	G4	32	H059	24	200	GX5.3	42	H039	24	25	BA20D
6	H490	6	10	G4	32	H081	12	20	GX5.3	43	H257	240	50	BX22D
7	H288	12	100	GY6.35	32	H173	21	150	GX5.3	43	H314	24	40	BX22D
7	H526	24	120	G6.35	32	H220	15	150	GZ6.35	43	H332	110	50	BX22D
7	H978	22.8	150	G6.35	32	H221	21	80	GX5.3	43	H377	24	50	BX22D
8	H309	24	250	G6.35	32	H222	82	360	GY5.3	43	H378	50	50	BX22D
9	H313	12	20	G4	32	H228	13.8	85	GX5.3	43	H384	110	50	BX22D
10	H514	12	50	Special	32	H230	120	300	GY5.3	44	H375	110	30	B15D
11	H013	240	650	GY9.5	32	H254	13.8	50	GX5.3	45	H374	24	25	BA15D
12	H019	12	100	GY9.5	32	H282	12	50	GU5.3	45	H376	12	25	BA15D
12	H020	24	150	GY9.5	32	H302	8	50	GZ6.35	46	H387	24	40	BA15D
13	H036	12	30	PG22	32	H303	12	20	GX5.3	47	H406	110	50	BA15D
13	H064	12	50	PG22	32	H320	12	50	GX5.3	48	H097	6	33	BA15D
13	H217	12	100	PG22	32	H338	24	250	G6.35	48	H296	240	20	BA15D
13	H242	24	250	PG22	32	H339	24	275	G6.35	48	H395	220	20	BA15D
13	H265	6	10	PG22	32	H364	14.5	90	GX5.3	49	H049	6	4.5a	P44S
13	H1112	6	20	PG22	32	H365	21	150	GX5.3					

Picture Number to HLS Number Index

	HLS	V	Watts	Base		HLS	Volt	Watts	Base		HLS	Volt	Watts	Base
50	H037	6	30	P47D	72	H440		100	No cable	104	H187	2.8		Screw
50	H038	6	50	P47D	72	H444	45	270	No cable	105	H188	3.5		Screw
51	H394	6	15	P25D	73	H008	30	375	R7S	106	H189	2.8		Flange
52	H216	6	4.5a	P40S	73	H009	240	600	R7S	107	H192	15.1	Halog	Screw
53	H262	6	25	P47D	73	H040	240	500	R7S	108	H193	6	Halog	Screw
54	H405	6	15	P25D/4	74	H029	22.8	75	R7S	109	H210	3.5	Halog	Flange
55	H063	6	15	PX22D	75	H468	240	300	R7S	110	H271	2.5	Clear	Ring
55	H391	6	15	P22D	76	H158		200	D/End	111	H273	2.7	Clear	Ring
56	H372	240	15	BA15D	77	H249	220	175	R7S	112	H274	2.7	Clear	Screw
56	H511	6	15	BA15D	78	H287		50	D/End	113	H421	2.5		Flange
57	H411	12.8	0.94a	BA15S	79	H286		50		114	H677	3.5		Red
57	H491	6	1.4a	BA15S	80	H379	22.8	75	R7S	114	H1059	2.8		Blue
58	H293	6	5a	BA15S	81	H118	20	100	D/End	115	H337	3		
59	H233	6.5	2.75a	Ba15d	81	H356		100	D/End	116	H078	6	Halog	Screw
60	H046	6	15	BA15S	81	H419		100	D/End	117	H079	6	Halog	Flange
60	H298	6	15	BA15d	82	H408	240	250	BA15D	118	H165	2.7	Frost	Spring
61	H295	240	25	E27	83	H289	12	30	MCC	119	H152	2.5	Halog	Flange
61	H299	240	15	E27	84	H341	14	180	Leads	120	H980		18w	2G11
61	H324	220	20	E26/25	85	H001L	13.9	300		121	H150		36	2G11
62	H297	6	2.4	E10	86	H001U	13.9	300		122	H4562		18	
62	H507	6	2.4	E10	86	H056	13.9	300		123	H498		18	2G11
63	H652	6	5	E10	87	H422	13.9	300		124	H4510		38	4 Pin
64	H621	6	10	E10	88				Mercury Free Timer (H001L)	125	H4502		16	2Pin
65	H431	6	5	B15S	89	H354			Timer for ceramic Xenon	126	H4507		28	4 Pin
66	H455	6	6	Special	90	H103	14	175		127	HY72000			W/Allyn Type Red
67	H505	6	10	BA15S	91	H082	3.5	Halog	Flange	128	HY72200			Battery Pack Black
68	H508	240	10	BA15D	92	H084	2.5	Halog	Screw	129	H323		40	G13
69	H503	12	5	BA9S	93	H085	3.5		Red	130	H445		20	G13
70	H475		24	2 Pin	94	H088	2.8		Blue	131	H481		100	G13
71	H061	45	270	5 Pin	95	H089	6	10	Flange	132	H481E		100	EXT
71	H062	55	400	5 Pin	96	H091	3.5		Red	133	H522		40	G13G
71	H092	55	400	5 Pin	97	H121	2.5	Halog	Screw	134	H435		100	G13G
71	H140		100	5 Pin	98	H119	2.5	Halog	Screw	135	H496		20	G13
71	H200		100	5 Pin	98	H122	2.5	Halog	Screw	137	H448		100	G13
71	H334		250	4 Pin	99	H130	3.5	Halog	Screw	138	H316		20	G13
71	H457	55	400	4 Pin	100	H141	3.5	Halog	Screw	139	H318		40	G13
71	H346	45	270	4 Pin	101	H083	2.5	Vac	Screw	140	H342		20	G13
71	H542	14	180	leads	101	H153	2.5	Vac	Screw	141	H343			ES10 Starter for TL01
72	H060	45	270	No cable	102	H154	3.5	Halog	Flange	142	H9233			S10 Starter for H522
72	H077		100	No cable	103	H167	3.5	35mm	Red	143	H518			S12 Starter for H481 TL01
72	H301		180	No cable						144	H9235			S16 Starter for H435



Hospital Lamp Supplies

Hybec Genuine Projector Lamps

Telephone 0116 2342929
Or e-mail hls@hybec.com

Lamp References

ANSI CODED LAMPS	
Reference	HLS
BAB	H826
BHB	H432
BRL	H006
BRJ	H014
CHY	H515
DDL	H470
DDM	H054
DDS	H221
DED	H228
DJT	H254
DNE	H1195
DNF	H021
DWZ	H008
DYR	H013
DZV	H465
EFM	H302
EFN	H010
EFP	H011
EFR	H012
EHE	H217
EHJ	H007
EHT	H1350
EJA	H055
EJL	H016
EJM	H057
EJN	H365
EJV	H173
EJY	H054
EKE	H442
EKS	H017
ELC	H018
ELD	H365
ELH	H230
ELZ	H1349
EMM	H017
ENL	H320
ENX	H222
ENZ	H1354
EPN	H058
EPS	H022
EPX	H364

ANSI CODED LAMPS	
Reference	HLS
EPZ	H254
ESB	H285
ESD	H768
ESR	H113
ESP	H114
ESS	H115
ESX Open	H303
ESX Glass	H081
ETA	H217
ETJ	H1348
EVA	H288
EVB	H014
EVC	H338
EVD	H015
EWf	H059
EXN Open	H225
EXR	H238
EXT closed	H300
EXZ	H211
EXZ Glass	H866
FCR	H004
FCS	H005
FDT	H019
FDS	H020
FDV	H214
FHD	H285
FHE	H048
FMW	H471
FNT	H339
FST	H219
FSY	H315
FTC Glass	H467
FTD	H407
FTF	H304
FXL	H458
GBH	H256
GBJ	H437
GBK	H335
GED	H433

A1 SERIES LAMPS	
Reference	HLS
A1/45	H217
A1/166	H5020
A1/207	H003
A1/215	H004
A1/216	H005
A1/220	H006
A1/223	H007
A1/226	H008
A1/228	H009
A1/229	H302
A1/230	H010
A1/231	H011
A1/232	H012
A1/233	H013
A1/234	H014
A1/235	H242
A1/239	H015
A1/244	H333
A1/245	H331
A1/252	H016
A1/254	H351
A1/258	H017
A1/259	H018
A1/261	H019
A1/262	H020
A1/265	H465
A1/266	H021
A1/268	H022

DECOSTAR LAMPS	
Reference	HLS
MK35	H472
51 UV Stop	H212
51 UV Stop	H282
51 U	H211
51	H300

H REFERENCES	
Reference	HLS
H 2435	H284
H152425	H024
H152440	H031
H164445	H050
H22050D	H231
H222450	H026

M REFERENCES	
Reference	HLS
M16	N/A
M19	H063
M28	H288
M29	H285
M30	H048
M31	H505
M32	H043
M35	H247
M38	H397
M38	H398
M40 6877P	H213
M43	H490
M50 30709	H211
M50 U	H211
M54	H219
M56	H335
M57	H437
M65	H472
M66	H304
M67	H469
M81	H471
M86	H520
M89 UV	H1024

Q REFERENCES	
Reference	HLS
QI B	H006
QI 384-643	H164
QI	H054
QI	H055

Not Listed Here?

Hospital Lamp Supplies have an extensive database of cross references for a wide variety of specialist lamps and general lighting products.

Telephone 0116 2342929 or e-mail hls@hybec.com

Lamp Manufacturers References

HANALUX	
56004653	H450
56015282	H373
56016164	H374
56016170	H375
56016191	H376
56016238	H439
56016678	H377
56016679	H384
56016685	H378
56018366	H379
56018505	H380
56018550	H387
56018566	H381
56018769	H382
56050488	H450
56051757	H373
56053010	H389
56018565	H388
567901948	H385

HANALUX Type	
015282	H023
016164	H024
016170	H250
016191	H227
016372	H625
016544	H314
016678	H026
016679	H332
016685	H027
018250	H231
018252	H308
018253	H257
018306	H028
018366	H029
018505	H030
018550	H031
018566	H032
018576	H050
018769	H033
051757	H023
053098	H125
053296	H1265

HEINE	
X-01-88-032	H110
X-01-88-035	H121
X-01-88-037	H122
X-01-88-038	H123
X-01-88-040	H124
X-01-88-041	H109
X-01-88-042	H076
X-01-88-056	H128
X-01-88-057	H129
X-01-88-059	H119
X-01-88-069	H336
X-01-88-077	H413
X-01-88-084	H414
X-02-88-044	H130
X-02-88-046	H131
X-02-88-048	H446
X-02-88-049	H132
X-02-88-050	H133
X-02-88-051	H134
X-02-88-063	H136
X-02-88-070	H310
X-02-88-078	H311
X-02-88-089	H486
X-02-88-099	H312
X-04-88-060	H078
X-04-88-068	H079
X-04-88-104	H488
X-96-11-103	H012

HOSOBUCHI	
111	H502
214 Clear	H324
3601	H296
03633	H295
03638	H299
Keratometer	H507

McINTOSH	
99-173	H267
99-05201	H269
99-05203	H271
99-05204	H272

RIESTER	
10600	H426
10601	H427
10605	H428
10606	H429

KEELER			
A2703	H088	1015-P-5175	H189
A2743	H187	1015-P-5191	H187
A2833	H087	1015-P-7023	H188
1011-P-5039	H088	1015-P-7031	H187
1011-P-5047	H087	1015-P-7058	H091
1011-P-5055	H085	1015-P-7066	H189
1011-P-5223	H088	1016-P-5003	H245
1011-P-5282	H087	1018-P-5111	H093
1011-P-7034	H085	1018-P-5146	H094
1011-P-7042	H088	1022-L-7011	H294
1011-P-7050	H087	1024-L-1019	H295
1011-P-7106	H1059	1024-L-1019	H295
1011-P-7114	H677	1024-L-1043	H099
1012-P-5006	H052	1024-L-1123	H297
1012-P-5014	H179	1024-L-1158	H298
1012-P-5102	H090	1024-L-1166	H299
1012-P-5110	H089	1024-P-7156	H095
1012-P-7001	H179	1029-P-7008	H012
1012-P-7002	H090	1030-L-2018	H049
1012-P-7003	H089	1030-L-2018	H049
1013-P-5075	H184	1030-L-2050	H260
1013-P-5083	H182	1030-L-2050	H260
1013-P-5091	H183	1030-L-2085	H261
1013-P-5104	H180	1030-L-2085	H261
1013-P-5112	H181	1030-L-2093	H259
1013-P-5120	H170	1030-L-2093	H259
1013-P-5139	H171	1031-L-2191	H649
1013-P-5155	H168	1013-P-7003	H181
1013-P-5163	H169	1013-P-7004	H170
1013-P-5171	H215	1013-P-7005	H171
1013-P-5198	H167	1013-P-7006	H168
1013-P-7000	H182	1013-P-7007	H169
1013-P-7001	H183	1013-P-7008	H215
1013-P-7001	H183	1013-P-7009	H167
1013-P-7002	H180	1015-P-5044	H187
1015-P-5116	H091	1015-P-5079	H188
1015-P-5124	H189		

ZEISS			
38-00-181740	H405	39-01-53	H262
38-00-75	H217	39-01-58	H037
38-00-799040	H011	39-01-86	H038
38-01-207040	H036	39-04-13	H406
38-01-207030	H265	125-16-3D	H366
38-01-77	H391	30323	H036
38-01-181730	H391	H08168	H411
38-08-20	H299	OPMI 6	H037

WELCH ALLYN	
200	H080
600	H194
1000	H530
1200	H541
1300	H197
1400	H198
1800	H531
2000	H532
2100	H137
2200	H533
2300	H138
2500	H139
2600	H199
3000	H082
3100	H141
3300	H143
3400	H145
3500	H147
3700	H204
3900	H148
4000	H193
4100	H534
4200	H058
4400	H152
4500	H206
4600	H535
4700	H083
4800	H153
4900	H154
6000	H084
6100	H192
6200	H207
6300	H313
6400	H536
7200	H537
7600	H209
7800	H193
8200	H210
8300	H500
8400	H538
8500	H156
9500	H475
9600	H476
73210	H539
72200	HY72200
72000	HY72000

Lamp Manufacturers References

OSRAM			
41870 SP	H300	HLX 64609	H064
41870 WFL	H225	HLX 64610	H006
41892 SP	H472	HLX 64615	H010
41990 FL	H489	HLX 64625	H004
54392	H238	HLX 64626	H217
64222	H265	HLX 64627	H011
64225	H285	HLX 64633	H014
64260	H036	HLX 64634	H012
64261	H495	HLX 64635 Gold	H220
64607	H302	HLX 64638	H509
64600	H072	HLX 64640	H005
64613	H073	HLX 64642	H214
64617	H074	HLX 64650	H693
64618	H228	HLX 64653	H018
93515	H238	HLX 64655	H007
93631	H021	HLX 64655 Frosted	H309
HBO 100W/2	H419	HLX 64657	H338
HBO 103 W/2	H356	HLX 64663	H015
HBO 200W/4L1	H158	HTI 250/W/22	H444
HBO 50W/ACL1	H286	HTI 250/W/22C	H346
HBO 50W/ACL2	H287	HTI 250/W/32	H060
HLX 62138	H319	HTI 250/W/32C	H061
HLX 64111	H503	HTI 250/W/SE	H417
HLX 64150	H218	HTI 400/W/24 5 Pin	H062
HLX 64151	H166	HTI 400/W/24 4 Pin	H457
HLX 64175	H232	HTI 403/W/24	H092
HLX 64250	H048	XBO 100W/45	H440
HLX 64251	H1112	XBO 1600W/OFR	H545
HLX 64425	H313	XBO R100/45	H077
HLX 64432	H246	XBO R100W/45C	H200
HLX 64440	H043	XBO R101W/45C	H140
HLX 64440S Gold	H815	XBO R180W/45	H301
HLX 64445U UV	H1024	XBO R180W/45C	H542
HLX 64460	H469	XBO R180 W/45C	H542
HLX 64479 Pearl	H408	XBO R181W/45C	H341

PHILIPS			
4435	H289	7388	H048
5761	H160	7389	H333
5972	H490	7724	H288
6423	H012	7748S	H007
6430	H256	7787S	H015
6438	H437	13078	H520
6439	H335	13101	H264
6550	H014	13090	H120
6834	H011	13100	H288
6839 C	H217	13160	H221
6958	H338	13163	H018
PF712E	H355	13165	H276
7023	H004	13189	H254
7027	H006	13311	H232
7027 3D	H366	13347W	H511
7143 D	H507	13528	H161
7158	H005	13702C	H063
7387	H285	491886	H009

OTHERS	
ALM ECA001	H424
ALM/DIS 21921	H424
ALM ECA002	H424
ALM ECL001	H340
ANGENIEUX 104316	H232
ANGENIEUX 186762	H420
ANGENIEUX 163508	H053
ANGENIEUX 76554	H309
Amsco P129362-001	H675
Amsco P129362-228	H044
Amsco P129249-001	H045
Amsco P128249-001	H045
BERCHTOLD C450	H672
BERCHTOLD C570	H673
BERCHTOLD C950G	H674
BERCHTOLD CZ908-24	H214
BERCHTOLD CZ908-22	H978
BRANDON THE178	H693
DKK H24501	H051
GE428	H621
GE1460	H393
GUERRA 0970/8	H243
GUERRA 0376/2	H462
GUERRA 6701/2	H667
GUERRA 6419/3A	H032
GUERRA 5727/SM	H045
GUERRA 0574/3	H031
GUERRA 0376/1	H024
KA109 GOLD	H220
KIMEX 936009	H026
KIMEX 936014	H031
NARVA 2006 A20-1	H434
NARVA HLL55181	H033
NARVA HLL55241	H032
OLYMPUS 8C 101	H347
OLYMPUS 8C 102	H348
OLYMPUS 8C 103	H349
OLYMPUS L5150588	H349
OLYMPUS 35353	H118
OLYMPUS 35325	H621
OLYMPUS TB-1	H347
OLYMPUS ZM036500	H492
PENLON 057	H274
PENLON 50542	H084
PENLON 55091	H273
PENLON 55091+WSHR	H274
PENLON 55092	H421
PENLON 55094	H337
RADIUM 585E	H039
RADIUM RJT5012FL	H489
TIMESCO 4075 250 20	H122
TIMESCO 4075 250 20	H132
TIMESCO 2905 325 20	H273
USHIO USH-102D	H118
USHIO USH 50	H286
USHIO SMH 8000325	H023

Equipment Manufacturers References

ANALYSERS	
Humphrey Model 600	H411
Humphrey Model 700	H407

ANOSCOPES	
Welch Allyn 38800	H080
Welch Allyn Series 380	H080
Welch Allyn Series 385	H080
Welch Allyn Series 395	H080

AUDIOSCOPES	
Welch Allyn 23020	H207
Welch Allyn 23040	H207
Welch Allyn 23000	H207
Welch Allyn 23300	H207

EPISCOPE	
Welch Allyn 47300	H082

EXAMINATION / THEATRE	
ALM/DIS 21921	H424
ALM ECA001 ECA002	H424
ALM ECL0001	H340
ALM H6951	H663
ALM H6990	H664
ALM 153091	H370
Amsco P129362-001	H675
Amsco P129362-228	H044
Amsco P129249-001	H045
Amsco P128249-001	H045
Angenieux 76554	H309
Angenieux 104316	H232
Angenieux 163508	H053
Angenieux 186762	H420
Berchtold C450	H672
Berchtold C570	H673
Berchtold C950G	H674
Berchtold CZ905-22	H672
Berchtold CZ905-24	H420
Berchtold CZ906-24	H214
Berchtold CZ907-22	H674
Berchtold CZ908-22	H978
Berchtold CZ908-24	H214
Berchtold CZ916-04	H039
Berchtold CZ940-12	H814
Berchtold CZ955-12	H006

EXAMINATION / THEATRE	
Brandon Astralite	H023
Brandon Coolview C20	H1433
Brandon Coolview C35	H969
Brandon Coolview C50	H911111
Brandon Coolview HX35	H1434
Brandon Coolview XM	H1385
Brandon Galaxy MKII	H1247
Brandon Galaxy Ultra	H023
Brandon THE178	H693
Hanaulux Type 015282	H023
Hanaulux Type 016164	H024
Hanaulux Type 016170	H250
Hanaulux Type 016191	H227
Hanaulux Type 016372	H025
Hanaulux Type 016554	H314
Hanaulux Type 016678	H026
Hanaulux Type 016679	H332
Hanaulux Type 016685	H027
Hanaulux Type 018250	H231
Hanaulux Type 018252	H308
Hanaulux Type 018253	H257
Hanaulux Type 018306	H028
Hanaulux Type 018366	H029
Hanaulux Type 018505	H030
Hanaulux Type 018550	H031
Hanaulux Type 018566	H032
Hanaulux Type 018576	H050
Hanaulux Type 018769	H033
Hanaulux Type 051757	H023
Hanaulux Type 053198	H125
Hanaulux Type 053296	H1265
Hanaulux 56004653	H450
Hanaulux 56018565	H388
Hanaulux 56050488	H450
Hanaulux 56053010	H389
Hanaulux 56053026	H390
Martin 86-905-01	H526
Martin 86-907-01	H214
Martin 88-906-24	H214
Martin 88-916-04	H039
Welch Allyn 44100	H313
Welch Allyn 44110	H313
Welch Allyn 44200	H536
Welch Allyn 48400	H534
Welch Allyn 48410	H534
Welch Allyn 48435	H058

FOCIMETERS	
Topcon LM6	H295
Topcon LM7	H299
Nikon OL-5A	H299
Nikon PL2	H394

FUNDUS CAMERA	
Kowa KWG 100, 150, 200, 300	H402
Kowa KWN 651	H403
Kowa KWN 502, 551, 800, 900	H404
Zeiss FF450	H064

HEADLIGHTS	
Welch Allyn 45003	H532
Welch Allyn 46003	H139
Welch Allyn 49003	H199

ILLUMINATORS	
Welch Allyn 27200	H145

KERATOMETER	
Haag Streit	H507
Hosubuchi 80-A-WW	H510
Kliene 270E	H088
Topcon OM2	H295

LARYNGOSCOPES	
Gowlland	H401
Penlon 057, 55091 (no washer)	H274
Penlon 55091	H273
Penlon 55092	H421
Penlon 55094	H337
Perkins	H401
Pneu-Pac Gold	H122
Pneu-Pac Silver	H083
Timesco 4075 250 20 2.5v	H122
Timesco 4075 250 20 3.5v	H132
Welch Allyn 334, 634 ,674	H083
Welch Allyn 680, 690 ,692, 694	H083
Welch Allyn 60715,60803,60804	H084
Welch Allyn 60803,60814,60815	H084

LENSMETERS	
Nidek LM350	H602
Topcon LM2, LM13	H295
Topcon LM5, LM6, LM7	H299
Topcon 8-155	H299

Equipment Manufacturers References

MICROSCOPES	
American Optical 1120	H048
American Optical 1121	H048
American Optical 1182	H054
Bausch & Lomb 31-31-52	H442
Bausch & Lomb 31-31-58	H019
Bausch & Lomb 31-31-65	H286
Bausch & Lomb 31-31-81	H048
Bausch & Lomb 31-31-85	H019
CK	H499
Gillett & Seibert	H928
Griffin Gamma 20	H361
Hund H500	H356
Leica 10-317-243	H006
Leica 10445334	H514
Leica DMLB	H356
Leica DMLS	H495
Leica DMRB	H004
Leica Intralux 4000	H364
Leica MK	H164
Leica MTR 29	H503
Leitz Dialux 20	H043
Leitz Dialux 20 D	H004
Leitz Dialux 20EB	H048
Leitz Dialux Special	H511
Leitz Diaplan	H004
Leitz Diaplan	H006
Leitz Diaplan	H286
Leitz Diavert	H394
Leitz HM Lux	H505
Leitz Laborlux S	H004
Leitz Laborlux	H048
Leitz Laborlux 12	H048
Leitz Laborlux II	H048
Leitz Laborlux K	H048
Leitz Orthomat	H004
Leitz Orthoplan	H004
Leitz SM Lux	H490
Leitz SM WX	H505
Meiji BM33964	H464
Nikon 4000 Eclipse	H160
Nikon Alphaphot	H618
Nikon 2S650-023	H608
Nikon Diaphot	H043
Nikon E400	H118

Nikon E400	H160
Nikon Labophot	H048
Nikon Labophot II	H160
Nikon Labophot II	H394
Nikon Labophot II	H631
Nikon Labphot	H815
Nikon L/phot Marker	H6096
Nikon Optiphot	H288
Nikon Optiphot D/H	H043
Nikon Pabophot	H048
Olympus 35325	H621
Olympus BH2	H288
Olympus BH2 UV	H118
Olympus BX40	H160
Olympus BX41	H356
Olympus BX50 Main	H160
Olympus BX50 mark	H652
Olympus CH	H296
Olympus CH2	H608
Olympus CH2 Series	H048
Olympus EHCRTTR-1	H347
Olympus RH2-RFL	H419
Storz Urban	H012
Storz Urban	H103
Storz Xenon Nova 20	H514
Vickers Instrument	H063
Watson	H063
Weck OM1206	H011
Wild M3	H511
Wilovert	H490
Zeiss Axioscope II	H004
Zeiss ID03	H048
Zeiss Jena	H646
Zeiss Jenamed	H553
Zeiss OME 5000	H012
Zeiss OPMI - 1 FC	H011
Zeiss OPMI 6	H037
Zeiss OPMI 99	H055
Zeiss Standard 14	H490
Zeiss Standard 16	H490
Zeiss Student	H438
Zeiss Superlux 300	H442
Zeiss Universal S3B	H011

OPHTHALMASCOPES	
Reister 10605	H428
Reister 10606	H429
Welch Allyn 11110	H148
Welch Allyn 11400	H152
Welch Allyn 11411	H152
Welch Allyn 11470	H152
Welch Allyn 11475	H152
Welch Allyn 11600	H082
Welch Allyn 11605	H082
Welch Allyn 11610	H082
Welch Allyn 11710	H082
Welch Allyn 11720	H154
Welch Allyn 11730	H148
Welch Allyn 12810	H148
Welch Allyn 12900	H138

OPHTHALMOMETER	
Topcon OM3, OM4	H297

OTOSCOPES	
Eurolight C30	H122
Reister 10600	H426
Reister 10601	H427
Welch Allyn 20000	H141
Welch Allyn 20100	H080
Welch Allyn 20200	H141
Welch Allyn 20202	H141
Welch Allyn 21110	H145
Welch Allyn 21600	H080
Welch Allyn 21700	H141
Welch Allyn 23100	H141
Welch Allyn 23104	H145
Welch Allyn 24000	H145
Welch Allyn 24011	H145
Welch Allyn 24020	H145
Welch Allyn 24031	H145
Welch Allyn 25000	H141
Welch Allyn 25020	H141
Welch Allyn 52000	H141

NOT LISTED HERE ?

Let us find it for you

Hospital Lamp Supplies

0116 2342929

Equipment Manufacturers References

LIGHT SOURCE UNITS					
3D Scope	H001	Keymed Keylight 150	H012	Seaward 17.5113	H010
ACM 17 Circon ALV-1	H001	Lemke Endospot	H012	Seaward 150 19.5116	H012
Acuflex FRX 300	H001	Lemke XL202	H542	Seaward 100 19.5117	H011
Acuity TFX A09502	H200	Lemke XL754-2	H463	S & Nephew Dyo Bright	H001
Acuity A09501 A09502	H001	Linvatec 8140	H001	S & Nephew Dionics Autobrite	H001
Aesculap OP915	H005	Linvatec84258	H060	S & Nephew Dionics 7205070	H140
ALM MTAF Starpointe XE	H001	Linvatec 8430	H001	S & Nephew Dionics Xenon	H200
Applied Fibre-Optics Brite Lite 111	H001	Linvatec CLBS 20	H001	S & Nephew Dionics Xen XL	H341
Array Fuber 300W	H001	Lietchnica DXL 6000	H200	Solos ELS2	H103
Baxter Edwards OPTX 300	H001	Luxtec 1300	H021	Solos GS 9205	H001
Baxter Mueller Opsis VS 5500	H001	Luxtec 1900	H102	Solos GS 9255	H001
Baxter Mueller Opsis VS 5600	H001	Luxtec 7000	H102	Storz300	H001
BEI Xylog 300W	H001	Luxtec 9000	H001	Storz 450DV	H062
Birchter Solos ELS2	H103	Luxtec 9175	H103	Storz 480B	H007
Birchter Solos GS9205	H001	Luxtec 9300	H001	Storz 486	H014
Birchter Solos GS9255	H001	MPV Medicam 900	H061	Storz 610 & 611	H001
Cabot Medical System 3000	H001	Nextec 300w	H001	Storz 615	H001
Circon Acmi ALV1	H001	Olympus CLE 3	H012	Storz CLS/150/2	H014
Cooper Surgical Endomed LSS 700	H001	Olympus CLE-4U	H012	Storz Model 20 Xenon Nova	H514
Corin Medical Model XL-A180	H542	Olympus CLE-10	H012	Storz Xenon Nova 201315-20	H103
CUDA Model MZ-150-300	H021	Olympus CLH 250	H007	Storz Xenon Nova 201320-20	H103
CUDA Model 150	H055	Olympus CLV 10	H001	Storz Xenon Nova 201330-20	H001
CUDA Model XLS-180	H542	Olympus CLV F10	H001	Stryker 3000 220-130-300	H334
CUDA Model XLS-4200	H542	Olympus CLV-S	H001	Stryker 4000 220-172-000	H346
Downs 150, 2150	H012	Olympus CLV S20	H001	Stryker 5000 220-170-300	H444
Downs MK11	H012	Olympus CLV S30	H001	Stryker X6000 220-185-300	H001
Downs Twin 150	H012	Olympus CLV U20	H001	Tagarmno 35X Acubeam	H001
Downs Escolab VS135.01.K	H103	Olympus CLV U30	H001	Thackray System 80	H012
Downs LP-005-12-J	H001	Olympus CLV U40	H001	Vanguard XR-300	H001
Dualite 2000	H432	Olympus CV1	H001	Vanguard XR-35	H001
Endo Image 300	H001	Olympus ILV/CLV-A	H001	Vanguard XR-350	H001
Endolap S 605-25	H001	Olympus ILX/CLS	H001	Video Dynamics XLC 300	H001
Endolux 2 HSW 7011110020	H014	Olympus ILX 6300	H012	Welch Allyn Portable 09500	H475
Endomedics S1500	H001	Olympus MD-631	H001	Wolff 300w	H001
Endoscopic London	H012	Olympus OCS	H012	Wolff 4210	H007
ERBE 10329-001	H014	Olympus XLS OCLV-A	H103	Wolff 5018.01	H092
Evis 100	H001	Origin Medical 300w	H001	Wolff 5121	H103
Evis Lucera CLV 260	H001	Pentax EPK 1000	H542	Wolff 5123	H542
Fujinon EPX 201	H012	Pentax EPM 1000	H200	Wolff 5130	H457
FPO Fujinon EPX 302Y 1072/89	H001	Pentax EPM 3000	H001	Wolff Endolux 2	H014
Fujinon ELC-F1	H422	Pentax EPM 3300	H001	Xomed Xenon	H001
Fujinon XL 401	H422	Pentax EPM 3500	H001	Zeiss FF450	H064
Fujinon FLX 2000	H422	Pentax LE-150-P11	H012	Zeiss Pro-Magis S8	H542
Keymed Highlight 250	H060	Pentax LH-150-P11	H012	Zeiss Superlux 300	H001
		Pilling 300w	H001	Zeiss Superlux 301	H001
		Processor OLX 4 EMP3000	H001	Zeiss OPMI Vario S/8	H542

Equipment Manufacturers References

PENLIGHTS		
Welch Allyn	76000	H197
Welch Allyn	76600	H209
Welch Allyn	77700	H197
Welch Allyn	77800	H198

PROJECTORS		
3M 2010 AHUT		H222
3M 78 8057 4163 0		H315
3M 9000 AHDU		H339
3M 908		H007
3M 9080		H339
3M 9550		H015
3M G213		H222
3M OHP 1705		H007
3M OHP 1708		H007
3M OHP 1720		H007
3M OHP 1750		H015
3M Projector 5088		H022
Anders Imageplan		H007
Anders Lux 400		H015
Bell & Howell 1703		H007
CINE Saville Model D		H007
CTI County O.H.P.		H007
ELITE 2000 DL		H007
ELITE 9102328T		H007
ELITE 912		H007
ELITE Ambassador		H007
ELITE Viewrite II		H338
Kinder 9054		H338
Kodak S-AV		H005
NOBO 109		H007
NOBO 90		H007
NOBO 99		H007
Portascribe 330LV		H007
Roche XSL		H007
Sasco Traveller		H007
Topcon ACP5		H294
Topcon ACP6		H294
Topcon ACP7		H294

RETINOSCOPES		
Hamblin 3235		H171
Welch Allyn 17200		H537
Welch Allyn 18000		H082
Welch Allyn 18010		H206
Welch Allyn 18100		H204
Welch Allyn 18200		H210
Welch Allyn 18300		H500

SLIT LAMPS		
CSO Slit Lamp SL990/5		H048
Goldman Perimeter 5061015		H216
Grafton Optical		H502
Guerra 2158/1		H049
Haag Streit 900-930		H049
Haag Streit 940-750		H216
Haag Streit BC900		H396
HGM Slit Lamp		H1112
Hosobuchi OP 2118		H347
Hosobuchi OP 2120		H097
Hosobuchi OP 2121		H098
Hosobuchi OP 2202		H099
Hosobuchi OP 2550		H259
Keeler Slit Lamp 1030-L-2050		H260
Keeler Slit Lamp SL16		H1112
Kelvin LP 01		H049
Topcon SL-3C Slit Lamp Fix		H369
Topcon SL-3C Slit Lamp Fix		H048
Topcon Slit Lamp S13e/6s		H049
Topcon Slit Lamp SL-1D		H259
Topcon Slit Lamp SL-1E		H260
Topcon Slit Lamp SL-5D		H049
Topcon Slit Lamp SL-7F		H260
Topcon Slit Lamp SL-8Z		H497
Zeiss 125-16 3D		H366
Zeiss 38-01-20 7030		H265
Zeiss Slit Lamp 30-01-20		H265
Zeiss Slit Lamp f125 39-01-58		H037
Zeiss Slit Lamp Jena l 69		H646
Zeiss Slit Lamp SL120		H1112

STRABISMOSCOPE		
Welch Allyn	12400	H082

TONGUE BLADE HOLDERS		
Welch Allyn	28000	H197
Welch Allyn	28100	H141

TRANSILLUMINATORS		
Welch Allyn	26000	H080
Welch Allyn	26500	H141
Welch Allyn	27000	H141
Welch Allyn	27050	H141
Welch Allyn	41000	H080
Welch Allyn	41100	H141
Welch Allyn	43200	H530
Welch Allyn	43300	H141

VAGINAL SPECULA ILLUMINATOR		
Welch Allyn	78000	H193



If you can't identify the lamp you need



Just take a digital photo



and e-mail with as much information and equipment references to:

hls@hybec.com

Which Ceramic Xenon?

Full specification sheets for all our Ceramic Xenon lamps are available on request.

The choice is yours



H001L

Manufactured in USA
Supplied complete with
MERCURY FREE TIMER



H001U

New from Ushio
Available in 300w & 175w
700 Hr WARRANTY

H422

Manufactured by Ushio Japan
Long established
RENOWNED RELIABILITY



H056

Manufactured in USA
500 Hr Warranty
GREAT VALUE FOR MONEY



None of the above?

Hospital Lamp Supplies

source products from trusted suppliers globally.

If we don't stock it – we can get it.

Telephone 0116 2342929

HLS Number Index

HLS	Pic	Volt	Watt	Base
H001	86		300	Special
H004	1	12	100	GY6,35
H005	2	12	150	G6,35
H006	2	12	50	G6,35
H007	2	24	250	G6,35
H008	73	30	375	R7s
H009	73	240	600	R7s
H010	32	12	75	GZ6,35
H011	32	12	100	GZ6,35
H012	32	15	150	GZ6,35
H013	11	240	650	GY9,5
H014	2	15	150	G6,35
H015	2	36	400	G6,35
H016	32	24	200	GX5,3
H017		24	250	GY,7.9
H018	32	24	250	GX5,3
H019	12	12	100	GY9,5
H020	12	24	150	GY9,5
H022		240	500	G17t
H023	3	22.8	50	G6,35/AX
H024	37	24	25	BA15d
H026	38	24	50	BX22d
H027	38	50	50	BX22d
H028	39	24	40	BX22d
H029	74	22.8	75	R7S
H030	40	50	30	BA15d
H031	41	24	40	BA15d
H032	2	22.8	50	G6,35
H033	2	22.8	40	G6,35
H034	42	24	60	BA20d
H036	13	12	30	PG22
H037	50	6	30	P47D
H038	50	6	50	P47D
H039	42	24	25	BA20d
H040	73	240	500	R7s
H043	1	12	50	GY6,35
H044	19	22	220	GY9,5
H045	19	33	230	GY9,5
H046	60	6	15	Ba15s
H048	4	6	20	G4
H049	49	6	4.5A	P44S
H050	2	24	50	G6,35
H051	14	24	50	G8
H053	2	24	150	G6,35
H054	32	19	80	GX5,3
H055	32	21	150	GX5,3
H056	86	14	300	Special
H057	32	21	150	GX5,3
H058	32	12	35	GX5,3
H059	32	24	200	GX5,3
H060	72	45	270	No Lead
H061	71	45	270	5 Pin
H062	71	55	400	5 Pin

HLS	Pic	Volt	Watt	Base
H063	55	6	15	PX22d
H064	13	12	50	PG22
H066	16	6.6	45	PK30d
H068	16	6.6	100	PK30d
H076		2.5	Halog	Flange
H077	72		100	
H078	116	6	Halog	Screw
H079	117	6	Halog	Flange
H080			Vac	Screw
H081	32	12	20	GX5,3
H082	91	3.5	Halog	Flange
H083	101	2.5	Vac	Flange
H084	92	2.5	Halog	Screw
H085	93	3.5		Red
H087		2.8	Vac	Blue
H088	94	2.8		Blue
H089	95	6	10	Flange
H090				Flange
H091	96	3.5		Red
H092	71	55	400	5 Pin
H093		3.5		Screw
H094		3.5		Screw
H095				Flange
H097	48	6	3 a	BA15d
H099		7	35	BA15d
H103	90	14	175	
H109		2.5	Halog	Flange
H110		2.5	Halog	Flange
H113		120	100	BA15d
H114		120	150	BA15d
H115		120	250	BA15d
H118	81	20	100	D/End
H119	98	2.5	Halog	Screw
H120	1	24	50	GY6,35
H121	97	2.5	Halog	Screw
H122	98	2.5	Halog	Screw
H123		2.5	Halog	Flange
H124		2.5	Halog	Screw
H125	28	22.8	90	Special
H128		2.5	Halog	Flange
H129		2.5	Halog	Screw
H130	99	3.5	Halog	Screw
H131		3.5	Halog	Pin
H132		3.5	Halog	Screw
H133		3.5	Halog	Pin
H134		3.5	Halog	Screw
H136		3.5	Halog	Flange
H137		2.7	Vac	Flange
H138		2.5	Vac	Flange
H139		6V	6W	Screw
H140	71		100	E10
H141	100	3.5	Halog	Screw
H143			Halog	Flange

HLS	Pic	Volt	Watt	Base
H145			Halog	Flange
H147		3.5	Halog	Flange
H148			Halog	Flange
H150			36	Special
H152	119	2.5	Halog	Flange
H153	101		Vac	Screw
H154	102	3.5	Halog	Flange
H156			Halog	Flange
H157	33	20	150	GX5.3
H158	76		200	D/End
H160	5	6	30	GU4
H164	15	12	50	Special
H165	118	2.7	Frost	Spring
H166	16	12	55	Spring
H167	103	3.5	35mm	Red
H168		2.8		Blue
H169		3.5		Red
H170		2.7		Blue
H171		3.5		Red
H173	32	21	150	GX5.3
H179				2 Lug
H180		2.8	20mm	Blue
H181		3.5	20mm	Red
H182		2.8		Blue
H183		3.5		Red
H184		2.8		
H187	104	2.8		Screw
H188	105	3.5		Screw
H189	106	2.8		Flange
H192	107	15.1	Halo	Screw
H193	108	6	Halo	Screw
H194			Halo	Screw
H197			Vac	Screw
H198		2.5	Vac	Screw
H199			Vac	2Pin
H200	71		100	5 Pin
H201	33	12	35	Gx5.3
H204			Halo	Screw
H206			Halo	Flange
H207			Halo	I
H209			Halo	Screw
H210	109	3.5	Halo	Flange
H211	33	12	50	GX5,3
H212		220	10	
H213	21	240	500	GY9,5
H214	2	24	150	G6,35
H215		2.8		Flange
H216	52	6	4.5 a	P40S
H217	13	12	100	PG22
H218	17	12	55	P14.5S
H219	34	12	20	BA15D
H220	32	15	150	GZ6,35
H221	32	21	80	GX5,3

HLS Number Index

HLS	Pic	Volt	Watt	Base
H222	32	82	360	GY5,3
H223	17	24	70	P14,5S
H225	33	12	50	G6,35
H227	41	12	25	BA15D
H228	32	13.8	85	GX5,3
H230	32	120	300	GY5,3
H231	38	230	50	BX22D
H232		24	70	X511
H233	59	6.5	2.75a	Ba15D
H234	101		USE	H153
H238	35	82	300	GX5,3
H240	10	24	100	GY6,35
H242	13	24	250	PG22d
H243		24	25	BA20d
H245		2.25	.25A	E10
H246	1	12	35	GY6,35
H247	4	12	20	G4
H249	77	220	175	R7S
H250	41	110	30	B15D
H254	32	13.8	50	GX5,3
H256	34	6	35	Ba15D
H257	43	240	50	BX22D
H259		6	33	Flange
H260	27	6	20	Special
H261		6	0.2a	
H262	53	6	25	P47D
H264	2	12	75	GY6,35
H265	13	6	10	PG22
H267		2.7	Frost	Ring
H269		2.5	Clr	
H271	110	2.5	Clr	Screw
H272		2.5	Frost	Ring
H273	111	2.7	Clr	Screw
H274	112	2.7	Clr	Screw
H275		12	20	G4
H281		15	60	BA20D
H282	32	12	50	GU5,3
H283		12	50	GU5,3
H284		24	35	BA15D
H285	6	6	10	G4
H286	79		50	D/End
H287	78		50	D/End
H288	7	12	100	GY6,35
H289	83	12	30	MCC
H292		35	300	MCC
H293	58	6	5 a	BA15S
H295	61	240	25	E27
H296	48	240	20	BA15D
H297	62	6	2.4	E10
H298	60	6	15	BA15D
H299	61	240	15	E27
H300	33	12	50	GX5.3
H301	72		180	
H302	32	8	50	GZ6,35

HLS	Pic	Volt	Watt	Base
H303	32	12	20	GX5,3
H304		12	35	GZ4
H307	18	12	55	P14+
H308	39	240	50	BX22D
H309	8	24	250	G6,35
H310		3.5	Halo	Pin
H311		3.5	Halo	Pin
H312		3.5	Halo	
H313	9	12	20	G4
H314	43	24	40	BX22d
H315	19	240	400	GY9,5
H316	138	Blue	20	G13
H318	139		40	G13
H319	2	12	100	G6,35
H320	32	12	50	GX5,3
H323	129		40	G13l
H324	61	220	20	E26/25
H331	20	240	800	GY9.5
H332	43	110	50	BX22d
H333	20	240	500	GY9,5
H334	71		250	4 pin
H335	34	12	50	B15d
H336		2.5	Halo	Pin
H337	115	3		Special
H338	32	24	250	G6,35
H339	32	24	275	G6,35
H340	22	23	100	X514SP
H341	84	14	180	Leads
H342	140		20	G13
H343	141			ES10 Starter TL01
H346	71	45	270	4 pin
H347		6	30	BA15d
H348		6 - 8	30	Special
H349		6	15	Special
H351	19	240	500	GY9,5
H354	89			Timer for ceramic Xenons
H355		220	15	E27
H356	81		100	D/End
H361		220	10	BA15d
H364	32	14.5	90	GX5,3
H365	32	21	150	GX5,3
H366	24	12	50	P30s
H368	32	20	140	GX5,3
H370	23	24	100	X511
H372	56	240	15	BA15d
H373	10	22.8	50	G6,35A
H374	45	24	25	BA15d
H375	44	110	30	B15d
H376	45	12	25	BA15d
H377	43	24	50	BX22d
H378	43	50	50	BX22d
H379	80	22.8	75	R7s
H380	41	50	30	BA15d
H381	2	22.8	50	G6,35

HLS	Pic	Volt	Watt	Base
H382	2	22.8	40	G6,35
H384	43	110	50	BX22d
H385		22.8	40	BX22d
H386	40	24	40	BX22d
H387	46	24	40	BA15d
H388	32	12	100	GZ6,35
H389	29	24	50	Special
H390	30	21.5	130	Special
H391	55	6	15	P22D
H393		6.5	2.75a	P30d
H394	51	6	15	P25d
H395	48	220	20	BA15d
H396	25	12	30	Ceramic
H397		220	300	GY9.5
H398	21	240	300	GY9.5
H401		2.5	200ma	Flange
H402			100	Special
H403			150	Special
H404			300	Special
H405	54	6	15	P25D/4
H406	47	110	50	BA15D
H407		12	20	G4
H408		240	250	B15D
H411	57	12.8	.94 a	BA15S
H413		2.5	Halog	Pin
H414		2.5	Halog	Pin
H417		45	270	Special
H418			15	G13
H419	81		100	D/End
H420	2	24	100	G6.,35
H421	113	2.5		Flange
H422	87	14	300	
H424	23	24	120	X514
H426		2.5		
H427		3.5		
H428		2.5		
H429		3.5		
H430		12	50mA	slide
H431	65	6	5	B15S
H432		120	250	G7,9
H433	36	13.8	85	
H434		6	10	
H435	134		100	G13 G
H437	34	12	50	BA15D
H438		200	25	SES
H439	41	115	30	BA15d9
H440	72		100	
H442		21	150	GX5,3
H443		3	Vac	Flange
H444	72	45	270	No Lead
H445	130		20	G13
H446		3.5	Halo	Screw
H447	136		40	G13 Gld

HLS Number Index

HLS	Pic	Volt	Watt	Base
H447E			40	EXT
H448	137		100	G13 Gld
H448E			100	EXT
H450	36	12	100	Leads
H455	66	6	6	Special
H456				G5
H457	71	55	400	4 P Plug
H458	33	82	410	GY5,3
H462		24	30	BA15d9
H464		6	1.2 a	BA9s/13
H465	19	240	625	GY9.5
H467		12	20	G4
H468	75	240	300	R7S
H469	3	24	100	GY6,35
H470	33	20	150	GX5.3
H471	32	12	35	GX5.3
H472		12	35	GU4
H475	70		24	2 Pin
H476			24	
H481	131		100	G13
H481E	132		100	EXT
H486		3.5	Halo	Flange
H489		12	50	B15D
H490	6	6	10	G4
H491	57	6	1.4 a	BA15S
H493	16	12	35	PK22S
H495	2	12	30	G6.35
H496	135		20	G13
H496E		20		EXT
H498	123		18	2G11
H500		3.5	Halo	Flange
H502	26	12	4.2a	P44S
H503	69	12	5	BA9S
H505	67	6	10	BA15S
H507	62	6	3	E10

HLS	Pic	Volt	Watt	Base
H508	68	240	10	BA15D
H509	2	24	100	G6.35
H510		8		4pin
H511	56	6	15	BA15D
H514	10	12	50	Special
H515		230	50	BA15D
H518	143	S12 Starter (H481)		
H520	5	12	20	G4 S
H522	133		40	G13
H524	31		70	2P Plug
H526	7	24	120	G6.35
H530		2.5	Vac	Screw
H531		2.5	Vac	Screw
H532		7	Vac	MCC
H533		2.5	Vac	
H534		14.5	Halo	
H535		3.5		Screw
H536			25	GX5.3
H537		2.5	Halo	Flange
H538		2.5	Halo	Flange
H541			Halo	Flange
H542	71	14	180	leads
H551		120	50	E11
H552		3	0.5a	bi-pin
H553		6	25	PY16-
H602		220	15	E17
H608		120	30	BA15D
H618		220	30	BA15D
H621	64	6	10	E10
H625	40	24	40	BA15D
H631		6	15	BA15D
H646		6	15	
H649		6	33	BA15D
H652	63	6	5	E10

HLS	Pic	Volt	Watt	Base
H663	23	24	140	X514
H664	23	24	140	X514
H667		24	40	E11
H672	3	22.8	110	G6.35
H673		22.8	150	G6.35
H674		22.8	250	G6.35
H675		33	235	G,9.5
H677	114	3.5		Red
H693	3	22.8	50	G6.35
H814	3	12	35	GY6.35
H815	1	12	50	GY6.35
H826	33	12	20	GU5,3
H866	33	12	50	GU5,3
H889	2	12	30	G6.35
H928		6	21	BA15D
H969	33	12	35	GU4
H978	7	22.8	150	G6.35
H980	120		18	2G11
H1024	1	24	50	GY6.35
H1059	114	2.8		Blue
H1112	13	6	20	PG22
H1247	5	24	50	G6.35
H1265		22.8	113w	
H1385	3	12	50	GY6.35
H1433	33	12	20	GU5,3
H1434	33	12	35	GU5,3
H4500	125		10	4 pin
H4507	126		28	4 pin
H4510	124		38	4 pin
H4558	121		13	
H4562	122		18	
H6096		6	200ma	Flange
H9233	142	S10 Starter (H522)		
H9235	144	S16 Starter (H435)		
911111	33	12	50	GU5.3

Dental Lamp Supplies

Dental Lamp Supplies division, specialises in replacement lamps for curing lights, handpieces, examination lights etc. With over ten years experience serving the healthcare sector through their Hospital Lamp Supplies division, Hybec were aware that an increasing number of dental practices were sourcing their lamp requirements through them. With almost one hundred equipment manufacturers listed covering over three hundred product ranges, the www.dentallampsupplies.com website is an easy to use online shop offering the most comprehensive range of dental lamps in the UK at extremely competitive prices. Each manufacturers product is linked to a photograph of the lamp and details of wattage, voltage and cap type ensure easy identification. A free of charge lamp identification service is offered to all customers, and with an extensive stock of products in their Hospitals and General lighting ranges, Hybec UK can accommodate the majority of your lamp requirements.

Manufacturer	Model	Lamp
3-M	LC	H065
3-M	Ortholux, Vilolux II,	H074
3-M	Visalux, Visalux II	H069
3-M	Visilux, Visilux II	H074
3-M	Visolux, Visolux II	H074
3-M	XL-1000, XLS2500,3000	H074
3-M	XL-1500	H1083
A-Dec	6300	H005
A-Dec	Cascade Lite, Performer	H166
Air Techniques	Vista Cam	H012
Algotech	Walklite	H302
Almore	OP II	H074
Amaca	Elisse	H020
Belmont	Models 040, 045, 048,049	H166
Belmont	Clesta	H1401
Bosworth	Superlight	H012
Boyde Industries	OP Lite 12V Model	H081
Castellini	Luna	H5031
Castellini	Monta	H006
Castellini	Polylight	H065
Castellini	Polylight I, Polylight II	H071
Castellini	Polylight III	H1083
Castellini	Polysteril, Polysteril II	H302
Castellini	Solar, Vega	H006
Castle	Examination	H113
Castle	Panovision	H1352
Caulk	MaxLight, Prolite, Spectrum	H276
Caulk	Max Plus	H1083
Caulk	PR-1, Primetics Lite	H075
Caulk	Prisma Lite	H016
Caulk	Triad 1000, Triad 2000	H1348
Caulk	Triad TCU II	H173
Chayes Virginia	Chayes Light	H166
Coby	Coby Light	H055
Coe	Coe-Light	H012
Coltene/Whaledent	Coltolux 2, 3, & 4	H074
Cuda	M3-150 Multi, F/Optic Unit	H021
Cygnus Instrument	Cyгна Scope	H1348
Cygnus Instrument	Stylus 240	H010
Danserau Health	Overhead Exam	H166
Darby	Superdent 2001, & 2500	H074
Darby	Superdent 5000, & 8000	H768
Darby	Superdent 7500	H173
De Trey	Aucam	H011
De Trey	Prismetics Lite	H075
De Trey	Prismetics Lite II, & Euro	H074
De Trey	Spectrum	H1083

Manufacturer	Model	Lamp
Degussa	Degulux, Degulux Softstart	H074
Demetron-Kerr	Optilux 35, 50, 150,	H276
Demetron-Kerr	Optilux 100,101, 200,300	H074
Demetron-Kerr	Optilux 180, Optilux 360	H1083
Demetron-Kerr	Optilux 250, 350, VCL207	H276
Demetron-Kerr	Optilux 380	H1362
Demetron-Kerr	Optilux 400,401,402,403	H074
Demetron-Kerr	As Above - High Output	H075
Demetron-Kerr	Optilux: 500, 501	H1362
Den-Mat	Ceri-Light	H075
Den-Mat	Marathon	H768
Den-Mat	Marathon II, Visar II	H055
Dental Vision Dir	Ultra Cam	H815
Dental-Ez	AXCS Light	H005
Dental-Ez	Handpeice	H166
Dentamerica	Litex 650, Litex 660	H074
Dentsply	Euromax, Prolite	H276
Dentsply	Perspective Dental Imaging	H010
Dentsply	QLH 75, Spectrum 800	H072
Dexta	Star II 12V Model	H081
Dexter	Destilux	H074
Dolan Jenner	Fiberlite 170, Fiberlite 175	H173
Durr Dental	Alphacam, VistaCam	H011
Durr Dental	Panasonic	H012
Efos	Efos 35	H276
Efos	Efos Lite	H075
Eggert Lux	Q Lux Light	H074
Ellman Conversion	Illuminator	H1350
Envision	Polaris Intraoral	H1351
Espe	Ellipar II	H073
Eurodent	Illuminator	H005
Eurodent	Isolite	H214
Eurodent	Isosun	H469
Eurodent	Lysta	H065
Eurodent	Ruinito	H005
Eurodent	Ruinito (long Life)	H214
Faro (long life)	70, B4843, Sunlight	H214
Faro	B4843, Sunlight (Original)	H005
Faro	Kool Beam, S90, S2000	H020
Faro	P287 Polymerizing Lamp	H276
Faro	PU504, Polyspot	H1083
Faro	S70, SC90 (EDI & Forma)	H2268
Faro (Forma)	SC2000, TSC90, TSC2000	H2268
Fedesa	Lineo, Midway, Scorpio	H2268
First Medica	Hilux 200, 250, 300, 350	H074
Forest	9000 Model	H020

Manufacturer	Model	Lamp
Fuji Optical	Denta Cam II, Denta Cam 50,	H012
Fuji Optical	Denta Cam 100, Vision Plus	H012
Getz	Focus Activator	H075
Healthco	Aristocrat I Gun	H074
Healthco	Aristocrat II Gun	H276
Healthco	Aristocrat Light,OTP,Celebrity	H166
Healthco	VCL Illumin Wand H/O	H012
Healthco	VCL Illumination Wand	H1348
Henry Schein	Crusader	H020
Henry Schein	Maxima 250	H276
Henry Schein	Starbrite	H020
Henry Schein	VLC 300	H075
Ivoclar	(see Vivident)	
J. Morita	Illuminator	H005
J. Morita	Jet Lite 4000	H1083
Jovident	CU 80, CU100	H074
Kavo	Kavolux 1400	H214
Kavo	LCM Illumination System	H1360
Kavo	Lux Coupler F/O Bulb	H1360
Kavo	Optica F/O Unit	H011
Kavo	Polar II,	H1348
Kavo	Vicon DLS, LS, LS II,	H1348
Kavo	Polylux 1	H276
Kent	Command Light	H057
Kent	Kent Light	H074
Kinetic Inst	Sunlight II	H173
Kinetic Inst	Sunspot	H075
Knight Mfg	Exam Light	H020
Kulzer	Translux CL	H075
Kulzer	Translux EC, ECS, Translux II	H012
Lares	Apollo High Speed	H020
Lares	Handpeice. S-Sysyems	H020
Lares	Apollo, Apollo CP	H074
Lares	Quartz Fire SX	H1348
Lasac Tech	LTI-5000	H074
Lester A.Dine	Oral Scan	H055
Litema	Algotech LH5000	H012
Litema	Arcus I	H069
Litema	Arcus II	H1083
Litema	Astral	H074
Litema	Pluraflex HL150,	H012
Lysta	LC50, LC60, LC70, LC80	H065
Lysta	LC85, LC5055, LC5511	H065
Marcus	Examination Light	H020
MDT	Rolux	H016
MDT	Rolux II	H1354
Mectron	Pol Hall	H075
Mectron	Pol Hall	H075
Mectron	Pol Hall II, Bluelight,Pro	H1083
Mega Physik	Cromalux 75, 100	H075
Mega Physik	Optimeca, Optima 250	H007
Midwest	Insight I, Insight II, Tradition I	H1348
Midwest	Oral Illuminator 2 & 3	H1349
Motloid	Compolite 660	H074
New Image	AcuCam 120v 250w	H1348
New Image	AcuCam 12v 100w	H011
New Image	Dental View, Intra View	H1351
New Tech	Flexiscope	H011

Manufacturer	Model	Lamp
NSK	Novlite	H073
NSK	Opticure, Optica F/Optic	H011
NSK	Power Optic	H020
O'Ryan Industry	Omega 110, Omega 510	H1195
Panasonic	KS102 Fibre Optic Unit	H011
Pelton & Crane	Light Fantastic I & II	H1353
Pelton & Crane	Spirit F/Optic Handpeice	H020
Penn-Med	200L Original Wand	H768
Penn-Med	200L Wand	H173
Penn-Med	300L, 310 Gun	H074
Pharmethica	Hilux 200, 250, 300, 350	H074
Phasealloy	Witelite Gun	H074
Phasealloy	Witelite Wand	H768
Philips	Oralux	H006
Planmeca	Delight	H005
Planmeca	Delight (long Life)	H214
Porter	Daystar S-90B	H020
Pro Dental	Executor	H075
Pro Dental	Polylite 500, 1000, 2000	H768
Pro Dental	Pro Cam C1000	H1354
Pro Dental	ProScope 2000 & 4000	H074
Ritter	130, D44, D428, Lumostar	H005
Ritter long life)	130, D44, D428, Lumostar	H214
Ritter	Ritter H	H1352
Ritter	Super Starlight Ritter K	H020
Satelec	Acta	H276
Satelec	Servolite	H302
Sci Can	Dual Lux II Curing	H055
Sci Can	Dual Lux 2 & 3 Illuminator	H442
Sci Can	Dual Lux III Curing	H055
SDS	Fantastic 1300	H166
SDS	Model 1350	H005
Siemens	A1, Sirona E1	H005
Siemens	Sirolux	H166
Siemens	Sirolux S 12V	H288
Siemens	Sirona: C1, C2, C3, C4	H012
Siemens	Sirona: C7, C8	H276
Siemens	Sirona:M1	H074
Solid State Sys	Initiator	H012
SS White	Profile VCS	H075
Star Dental	Coloright 430SWL	H768
Star Dental	Coloright Krypton Halogen	H1360
Star Dental	Starflite	H021
Stern	Weber	H214
Trojan Research	Ultraeye	H442
Unitek	Ortolux XT	H074
Vacudent	Examination Light	H020
Villa	Moonlight	H166
Vivident	Astralis 10	H1362
Vivident	Astralis 5, Astralis 7	H074
Vivident	Heliolux WP	H074
Vivident	Heliolux, Heliolux II	H276
Vivident	Heliolux: GT, GTE, DLX	H074
Vivident	Heliomat	H012
Vivident	Vivalux, Vivalux II	H069
Voco	Profilux	H075
W & H	High speed Handpieces	H1520

Dental Lamps H005 – H074

H005



H006



H007



H010



H011



H012



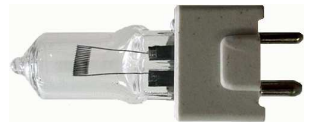
H016



H019



H020



H021



H055



H057



H065



H069



H071



H072



H073



H074



Dental Lamps H075 – H1350



Dental Lamps H1351 – H5031



Our range of Dental Lamps can also be purchased online

www.dentallampsupplies.com

We accept all major
credit cards and



DLS Number Index

H001	14v	300w	Special
Various makes		Light Source Units	

H005	24v	150w	G6.35
A-Dec		6300	
Dental-Ez		AXCS Light	
Eurodent		Illuminator, Ruinito	
Faro		B4843, Sunlight (original)	
J. Morita		Illuminator	
Planmeca		Delight	
Ritter		130, D44, D428, Lumostar	
SDS		Model 1350	
Siemens		A1, Sirona E1	

H006	12v	50w	GY6.35
Castellini		Monta, Solar, Vega	
Philips		Oralux	

H007	24v	250w	G6.35
Mega Physik		Dentalux Optimeca	
Mega Physik		Optima 250	

H010	12v	75w	GZ6.35
Cygnus		Stylus 240	
Dentsply		Perspective Dental	

H011	12v	100w	GZ6.35
De Trey		Aucam	
Durr Dental		Alphacam, Vista cam	
Kavo		Optica F/Optic Unit	
New Image		AcuCam 12v 100w	
New Tech		Flexiscope	
NSK		Opticure, Optica F/Optic	
Panasonic		KS102 F/Optic Unit	

H012	15v	150w	GZ6.35
Air Techniques		Vista Cam	
Bosworth		Superlight	
Coe		Coe-Light	
Durr Dental		Panasonic	
Air Techniques		Vista Cam	
Fuji		Denta Cam II, 50, 100	
Fuji		Vision Plus	
Healthco		VCL Illumination Wand	
Kulzer		Translux II, EC, ECS,	
Litema		Pluraflex HL150	
Litema		Algotech LH5000	
Siemens		Sirona: C1, C2, C3 & C4	
Solid State Systems		Initiator	
Vivident		Heliomat (Multi)	
Vivident		Heliomat H10(Single)	

H016	24v	200w	GX5.3
Caulk		Prisma Lite	
MDT		Rolux	

H019	12v	100w	GY9.5
Weber		Skylight SK100	

H020	24v	150w	GY9.5
Amaca		Elisse	
Faro		Kool Beam	
Faro		S90,S2000	
Henry Schein		Starbrite	
Knight Mfg		Exam Light	
Lares		Apollo handpiece	
Lares		S Systems	
Marcus		Examination Light	
NSK		Power Optic	
Pelton & Crane		Spirit F/O Handpiece	
Porter		Daystar S-90B	
Ritter		Super Starlight K	
Vacudent		Examination Light	

H021	21v	150w	GX7.9
Cuda		M3-150 Multi	
Star Dental		Starflite	

H055	21v	150w	GX5.3
Coby		Coby Light	
Den-Mat		Marathon II, Visar II	
Lester A Dine		Oral Scan	
Sci Can		Dual Lux II Curing	
Sci Can		Dual Lux III Curing	

H057	21v	150w	GX5.3
Kent		Command Light	

H065	8v	20w	GZX4
Castellini		Polylight	
Eurodent/Lysta		LC50, 60, 70, 80, & 85	
Eurodent/Lysta		LC5055, LC5511	

H069	6v	35w	GZ4
3-M		Visalux, Visalux II	
Litema		Arcus I	
Vivident		Vivalux, Vivalux II	

H071	8v	50w	GX6.35
Castellini		Polylight I & II	

H072	12v	75w	G5.3-4.8
3-M		Espe 2500	
Dentsply		QHL75	
Dentsply		Spectrum 800	

H073	12v	75w	G5.3-4.8
3-M		Ellipar II	
NSK		Novlight	

DLS Number Index

H074	12v	75w	G5.3-4.8
3-M		Ortholux	
3-M		Vilolux II	
3-M		Visilux, Visilux II	
3-M		Visolux Visolux II	
3-M		XL1000 XLS2500 & 3000	
Almore		OPII	
Coltene/Whaledent		Coltolux 2,3 &4	
Darby		Superdent 2001	
Darby		Superdent 2500	
De-Trey		Prismetics Lite II & Euro	
Degussa		Degulux, Softstart	
Demetron-Kerr		100VCL, 101VCL	
Demetron-Kerr		Optilux 200,300,	
Demetron-Kerr		400,401,402,403	
Demetron-Kerr		VCL200,VCL300	
Dentamerica		Litex 650 & 660	
Dexter		Destilux	
Eggertlux		Q Lux Light	
First Medica		Hilux 200, 250, 300, 350	
Healthco		Aristocrat I Gun	
Jovent		CU 80, CU100	
Kavo		Polylux II	
Kent		Kent Light	
Lares		Apollo, Apollo CP	
Lasac Tech		LTI-5000	
Mega Physik		Megalux CS	
Motloid		Compolite 660	
O'Ryan Industries		Omega750	
Penn-Med		300L, 310 Gun	
Phasealloy		Witelite Gun	
Pro Dental		Proscope 2000,4000	
Siemens		Sirona M1	
Unitek		Ortolux XT	
Vivident		Astralis 5, Astralis 7	
Vivident		Heliolux DLX,GT, GTE,WP	
Voco		Profil Lux	
Wykle Research		Witelite 1500	

H075	12v	100w	G5.3-4.8
Caulk		PR-1, Prismetics Lite	
Demetron-Kerr		Optilux 400,401,402,403	
Den-Mat		Ceri-Light	
Efos		Efos Lite	
Getz		Focus Activator	
Henry Schein		VCL 300	
Kinetic Instrument		Sunspot	
Kulzer		Translux CL	
Mectron		Pol Hall	
Mega Physik		Cromalux 75, 100	
Pro Dental		Executor	

H081	12v	20w	GX5.3
Boyde Industries		OP Lite 12v Model	
Dexta		Star II 12v Model	

H113	120v	100w	BA15d
Castle		Examination	

H166	12v	55w	PK22s
A-Dec		Cascade Lite, Performer	
Belmont		Model 040, 045 ,048, 049	
Chayes Virginia		Chayes Light	
Danserau Health		Overhead Exam	
Dental-EZ		Handpiece	
Healthco		Aristocrat, Celebrity, OTP	
SDS		Fantastic 1300	
Siemens		Sirolux	
Villa		Moonlight	

H173	21v	150w	GX5.3
Caulk		Triad TCU II	
Dolan Jenner		Fiberlite 170, 175	
Kinetic Instruments		Sunlight II	
Penn-Med		200L Wand	

H214	21v	150w	G6.35
Eurodent (Long life)		Ruinito, Isolite	
Faro (Long life)		B4843, 70, Sunlight	
Kavo		Kavolux 1400	
Planmeca (Long life)		Delight (Long life)	
Ritter (Long life)		130, D44, 428,Lumostar	

H240	24v	100w	GY6.35
Eurodent		Isosun	

H276	14v	35w	GZ4
Caulk		Maxlite, Prolite, Spectrum	
Demetron-Kerr		Optilux 35,50,150	
Demetron-Kerr		Optilux 250,,350,VCL207	
Efos		Efos 35	
Faro		P287 Polymerizing	
Healthco		Aristocrat II Gun	
Henry Schein		Maxima 250	
Kavo		Polylux I	
Satelec		Acta	
Siemens		Sirona C7, C8	
Vivident		Heliolux, Heliolux II	
Weil Dental		Elcelux	

H288	12v	100w	GY6.35
Siemens		Sirolux S 12v	
Kavo		Vicon LS II	

H302	8v	50w	GX6.35
Algotech		Walklite	
Castellini		Polysteril , Polysteril II	
Satelec		Servolite	

H364	14.5v	90w	GX5.3
Weber		Skylight SK580,800,900G	

DLS Number Index

H442	21v	150w	GX5.3
Trojan Research		Ultraeye	
Sci-Can		Dual Lux 2 & 3	

H469	24v	100w	GY6.35
Eurodent		Isosun	

H768	120v	150w	GY5.3
Darby		Superdent 5000, 8000	
Den-Mat		Marathon	
Penn-Med		200L Original Wand	
Phasealloy		Witelite Wand	
Pro Dental		Polylite 500, 1000, 2000	
Star Dental		Coloright 430 SWL	

H815	12v	50w	GY6.35
Dental Vision		Ultra Cam	

H1083	10v	52w	GZ4
3-M		XL-1500	
Castellini		Polylight III	
Caulk/De-Trey		Max Plus, Spectrum	
Demetron-Kerr		Optilux 180, 360	
Faro		Polyspot, PU504	
J Morita		Jet Lite 4000	
Litema		Arcus II	
Mectron		Bluelight, Pol Hall II	

H1195	120v	150w	Special
O'Ryan Industries		Omega 110, Omega 510	

H1348	120v	250w	GY5.3
Caulk		Triad 1000, Triad 2000	
Cygnus Instruments		Cygna Scope	
Healthco		VCL Illumination Wand	
Kavo		Polar II, Vicon DLS, LS	
Lares		Quartz Fire SX	
Midwest		Insight 1 & 2, Tradition I	
New Image		AcuCam 120v 250w	

H1349	21v	150w	GX7.9
Midwest		Oral Illuminator 2 & 3	

H1350	120v	250w	JD/E11
Ellman Conversion		Illuminator	

H1351	100v	150w	G6.35
Envision		Polaris Intraoral	
New Image		Dental View, Intra View	

H1352	120v	125w	P28S
Castle		Panovision	
Ritter		Ritter H	

H1353	25v	150w	R7s
Pelton & Crane		Light Fantastic 1	
Pelton & Crane		Light Fantastic 2	

H1354	30v	50w	GX5.3
MDT		Rolux II	
Pro Dental		Pro Cam C1000	

H1360	3.5v	780Ma	Special
Kavo		LCM System, Lux F/O	
Star Dental		Kolorite Krypton Halogen	

H1361	12/13v	86/100w	GZ4
Vivident		Astralis 10	

H1362	12v	80w	GZ4
Demetron-Kerr		Optilux 380, 500, 501	

H1401	24v	65w	PK22s
Belmont (Takara)		Clesta	

H1520			Special
W & H		High speed Handpieces	

H2268	17v	95w	GY9.5
Faro		SC70, SC90 EDI, Forma	
Faro		TSC90, SC/TSC2000 Forma	
Fedesa		Lineo, Medway, Scorpio	
Vitali		Cammologna	

H5031	12v	75w	GY6.35
Castellini		Luna	

**Dental
Lamp
Supplies**

*Hybec Limited. Registered in England. Company No. 2457400
Registered Office: Unit 9 Barrington Park, Leycroft Road,
Leicester UK LE4 1ET
Tel: 0044(0) 116 235 8818 Fax: 0044(0) 116 235 8810
Email: enquiries@hybec.com
Web page: www.hybec.com*

Fibre Optic Cables

PROCEDURE FOR ORDERING FIBRE OPTIC CABLE COMPLETE SETS

- 1 Choose length and core size from list below
- 2 Choose type A fitting (light Source end)
- 3 Choose type B fitting (Instrument end)
- 4 Enter all selected H numbers on your order



Zeiss Operating Microscope OPMI

Special cable with two short ends, complete with two of H564 Type A Adaptors
4.8mm core 1800mm long

LIGHT SOURCE END
TYPE A


CABLE

INSTRUMENT END
TYPE B

H572
ACM & British
Eschmann
Downs




H567
GU & Storz



H568
Heine



H570
Winter & Ibe



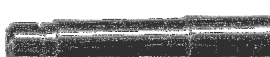
H566
Fuji
Olympus
Rimmer



H569
Pentax



H565
Dyonics
Stryker
Wolff



3.5mm core
1800mm long
H576

4.8mm core
1800mm long
H577

3.5mm core
2300mm long
H578

4.8mm core
2300mm long
H579

H573
ACM & British



H574
Wolff



H564
Zeiss OPMI



H559
Downs



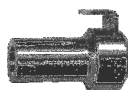
H575
Aesculap
Dyonics
Olympus, Storz, GU



H557
Wolff with clip



H560
ACM & British
With clip



UV Tubes to fit Phototherapy Cabins



**Cosmedico
Dixwell**



Waldmann



Product	Description	Also known as	Also known as	Also known as
H435	UVA 100W	Philips Cleo	Waldmann UVA-100W	Arimed PUVA
H353	UVB-6 100W		Waldmann - UV6	Arimed B6
H423	UVB-12 100W	Philips TL12	Waldmann - UV21	Arimed B12
H446	UV - 100W		Wolf Helarium	Arimed B
H448	UVA - 100W	Philips 100W RUVA		
H481	UVB-311-100W	Philips TL01	Waldmann - 01	Arimed TL / 01

UV Tubes for Hand & Foot Phototherapy Units



**Hybec H600
Waldmann 80/181/200**



Cosmedico TP-4



Product	Description	Also known as	Also known as	Also known as
H342	UVB - 20W	Philips TL12 - 20W	Waldmann UV21 20W	
H445	UVA - 20W	Philips TL44D25/09	Waldmann F15W/T8	180 unit
H447	UVA - 40W	Philips 40 W RUVA		
H456	UVA - 8W		Waldmann F08/T5	200 unit
H496	UVB 20 W	Philips TL01 20W		
H522	UVA - 40W	Philips Cleo - 40W	Philips TL 09	
H150	UVA		Waldmann 181	PUVA
H955	TL01 UVB		Waldmann 181	01

Durham Erythema Test Device

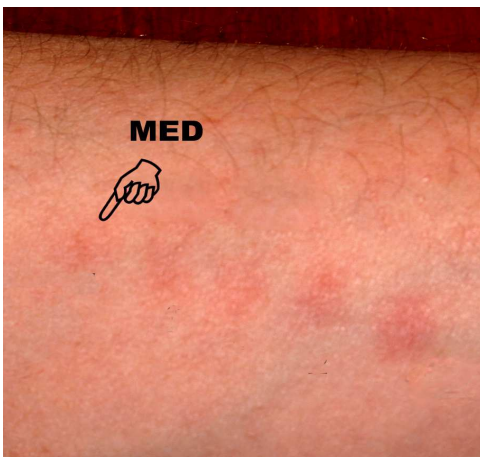
Hybec Limited in agreement with the Newcastle upon Tyne Regional Medical Physics Department markets the Durham Erythema Test Device. It is designed solely for the purpose of determining a minimal erythema dose or M.E.D, (the amount of UV radiation a patient can receive before experiencing just perceptible erythema). This information can then be used to calculate a starting dose for their treatment.



MD80938



Available in UVB Broadband Part Number H606 or UVB Narrowband Part Number



- For user guide go to www.hybec.com
- Hospital Lamp Supplies
 - Dermatology
 - Erythema Test Unit
 - Download User Guide.

Independent audit Researchers have recently proven the worth of the Durham Erythema Test Device. A British Journal of Dermatology paper† states that. "A recent comparison between the 'Durham' minimal erythema dose (MED) testing device and the older method found the Durham MED tester to be a convenient, safe and effective tool for determining patient MED values prior to narrow band UVB phototherapy." It goes on to state that. "These results show that the Durham MED tester gives very reproducible results. ... We conclude that the Durham MED test method is highly reproducible when used under carefully controlled lighting, using experienced observers."

† Otman SG, Edwards C, Wyness K, Anstey AV. British Photodermatology Group: Summaries of Papers PD-7. Reproducibility of a semi-automated method of minimal erythema dose testing. British Journal of Dermatology (2005) 153 (Suppl. 1): 92–98.

Durham Medimask



The need to shield the face during ultraviolet phototherapy treatment (either PUVA or UVB) is well recognised since the face receives frequent exposure to sunlight and is the most common site for skin cancers.

Protection against this damaging UV radiation is achieved by using the Durham Medimask, which was developed by Professor Brian Diffey and Dr Christine Steele from the Medical Physics and Dermatology Departments at Dryburn Hospital, Durham, UK. The Durham Medimask, manufactured and sold by Hybec Ltd., has the following features:

- Made from clear composite plastic film that blocks out 99% of UV radiation (A, B, & C) at wavelengths below 375nm.
- Protects the face & ears, but is easily cut and shaped to allow treatment of hairline or isolated psoriatic plaques on face.
- Each mask can be specific to a patient, lower risk of cross contamination, and can be disposed of after treatment is completed.
- Assembled in a single movement in seconds and is flat between treatment sessions for easy storage. (X-ray envelopes are perfect for this).
- Low cost as single size fits all patients.

The DURHAM MEDIMASK is available in packs of 10 or 25



**H993
Disposable UV Goggles**

Hospital Lamp Supplies



For more than 30 years the company Dr. K. Hönle Medizintechnik GmbH has specialized in the manufacturing of high-quality UV-irradiation units for the treatment of skin diseases like Psoriasis, Neurodermatitis or Vitiligo as well as iontophoresis units for the treatment of hyperhidrosis (excessive sweating on hands, feet and armpits). As authorised UK distributors, Hospital Lamp Supplies are able to supply Dr Hönle products at competitive prices to Hospitals, clinics, surgeries and where appropriate to end users. Full product specifications are available on request.

Dermalight 80

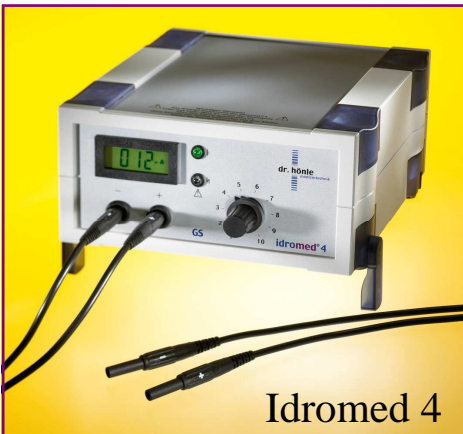


Dermalight 80 DRH004	UVB Broadband
UVA DRH003 DRH005	UVB Narrowband

Dermalight 180



Dermalight 180
UVA DRH006
UVB Broadband DRH007
UVB Narrowband DRH008




Idromed 4

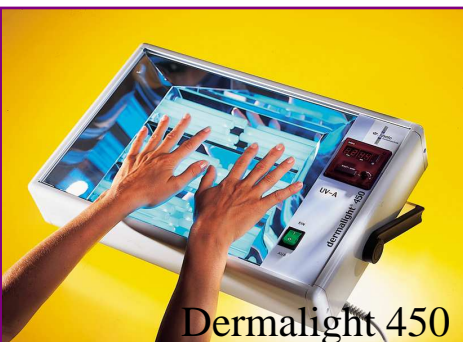


Iontophoresis Therapy
Idromed 4 DRH049
Electrode with sponges
DRH 050
Sponges only DRH436

Dermalight 80 Woodlamp



DRH090 UVA



Dermalight 450



MPD Tester

Dermalight 800



General Lighting Products

Hospital Lamp Supplies don't just supply specialist lamps, but can also cater for your general lighting requirements. We stock a comprehensive range of Energy saving Compact Fluorescents, Standard Fluorescents, Triphosphor Tubes, Low Voltage Dichroics, and lamps for Display lighting, Area floodlighting, Amenity lighting etc.

We only supply quality branded products from reputable manufacturers such as Osram, Philips and GE and we constantly monitor prices to ensure you always receive excellent value for money. Below are just a few examples of the products we offer.



H4566	Biax D 26w/840	£1.25
H4583	Biax D/E 26w/840	£1.25
H4562	Biax D 18w/840	£1.25



H52415	240v 150w 78mm	£1.25
H040	240v 500w 118mm	£1.25
H1605	240v 200w 118mm	£1.25



H4502	2D 16w 2 Pin	£2.75
H4507	2D 28w 4 Pin	£3.75
H4510	2D 38w 4 Pin	£3.95



H1432	M250 Titan 12v 50w	£1.20
H1118	M270 Titan 12v 35w	£1.20
H1433	M268 Titan 12v 20w	£1.20



H10002	SON-E 70w	£3.25
H10011	SON-T 250w	£5.20
H10006	SON-E 400w	£5.20



H6001	HQIT-S 70w	£5.25
H6004	HQIT-S 150w	£5.25
H6007	HQI-T 70w	£11.75

**Shatter Resistant ?
Food Safe ?
Ask for a quote**



**Hospital
Lamp
Supplies**

*Hybec Limited. Registered in England. Company No. 2457400
Registered Office: Unit 9 Barrington Park, Leycroft Road,
Leicester UK LE4 1ET*

Tel: 0044(0) 116 235 8818 Fax: 0044(0) 116 235 8810

Email: enquiries@hybec.com

Web page: www.hybec.com